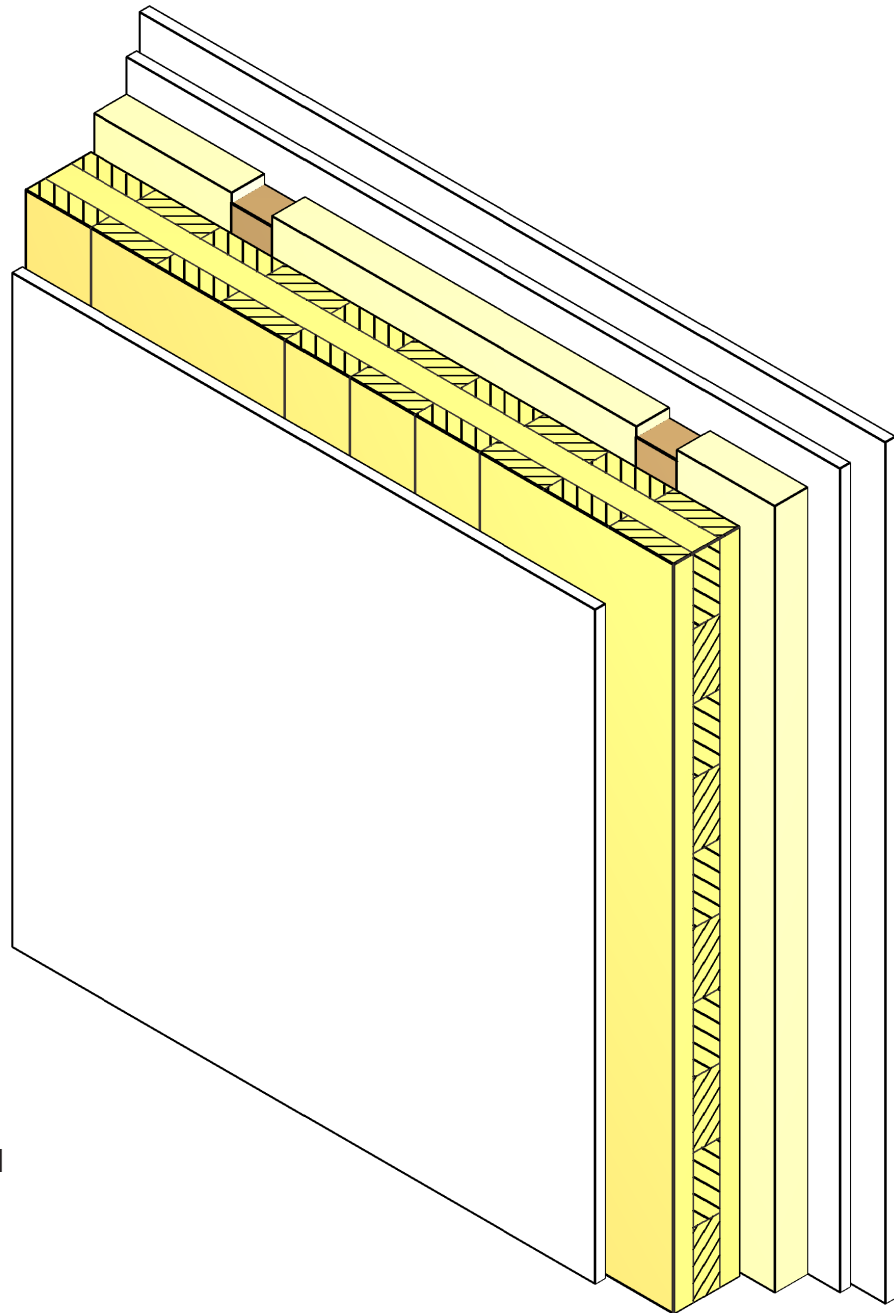


Soundproofing with CLT.

PARTITION WALL STRUCTURE

04/2015



Single layer, facing panel

- 12,5 mm plasterboard
- 100 mm Stora Enso CLT
- 5 mm glazing gasket
- 50 mm separate facing panel (CW-profile including 50 mm mineral wool)
- 12,5 mm plasterboard
- 12,5 mm plasterboard

$D_{nT,w} = 60 \text{ dB}$